

*Camp*  
ATTERBURY





COLONEL WELTON M. MODISETTE  
Commanding Officer,  
Camp Atterbury

**W**e hope this booklet will be helpful to military personnel at Camp Atterbury. It contains facts about the camp and its facilities, some pointers on telephone service, other useful information and a few pages for notes, addresses and telephone numbers.

**INDIANA BELL TELEPHONE COMPANY**

# Table of Contents

	Page
Automobiles . . . . .	14
Banking Service . . . . .	3
Camp Newspaper . . . . .	3
Guest Houses . . . . .	3
History of Camp Atterbury . . . . .	2
Housing Facilities . . . . .	14
Map of Camp Atterbury . . . . .	12-13
Medical Care . . . . .	4
Military Police . . . . .	14
Post Exchanges . . . . .	4
Post Office . . . . .	4
Recreation . . . . .	5
Red Cross . . . . .	6
Religious Services . . . . .	6
Service Clubs . . . . .	6
Telegrams . . . . .	7
Telephone Service . . . . .	15-19
Theaters . . . . .	7
Traffic Regulations . . . . .	14
Transportation . . . . .	8
U. S. O. . . . .	9
Wakeman General Hospital . . . . .	11

★ ★ ★ ★ ★ ★ ★ ★ ★ ★ ★ ★

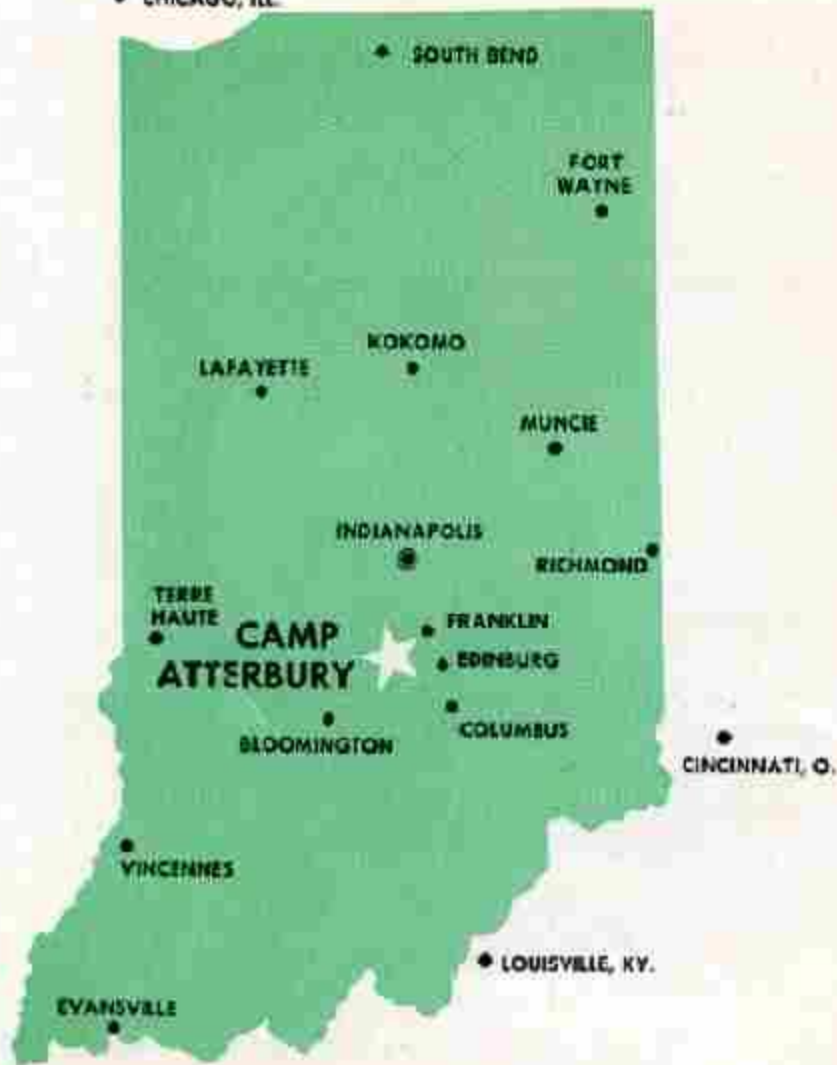
Name.....

Address.....

Rank.....

★ ★ ★ ★ ★ ★ ★ ★ ★ ★ ★ ★

• CHICAGO, ILL.



**C**AMP ATTERBURY, located 30 miles south of Indianapolis, near the town of Edinburg, is named after General W. W. Atterbury, Director of Transportation in World War I and former president of the Pennsylvania Railroad. Construction of the Camp, which covers 40,000 acres, began in February, 1942. By July, troops were moving in, and Camp Atterbury became the largest training center in Indiana. It is now the Personnel Center for the Fifth Service Command.

## *General Information*

**Banking Service**—The Irwin Union Trust Company of Columbus, Indiana, has a Camp Atterbury Branch located at 29th and Center Streets. It offers a complete general banking service, with no charge for commercial accounts. Hours are 11:30 a.m. to 4:30 p.m. except Sundays.

**Camp Newspaper**—The Camp Atterbury Crier is the Camp newspaper. It is published weekly by the Public Relations Office and circulated to all Camp personnel at no charge. The Crier features a weekly schedule of Camp activities.

**Guest Houses**—Three Guest Houses are provided in the Camp where your family and friends may stay while visiting you. (Children under 10 years of age are not permitted in the Guest Houses.) The rate is 50 cents per person per night, limit—3 nights. They are located in Buildings 111, 112 and 1368.

— 3 —

One of the Camp's Three Guest Houses





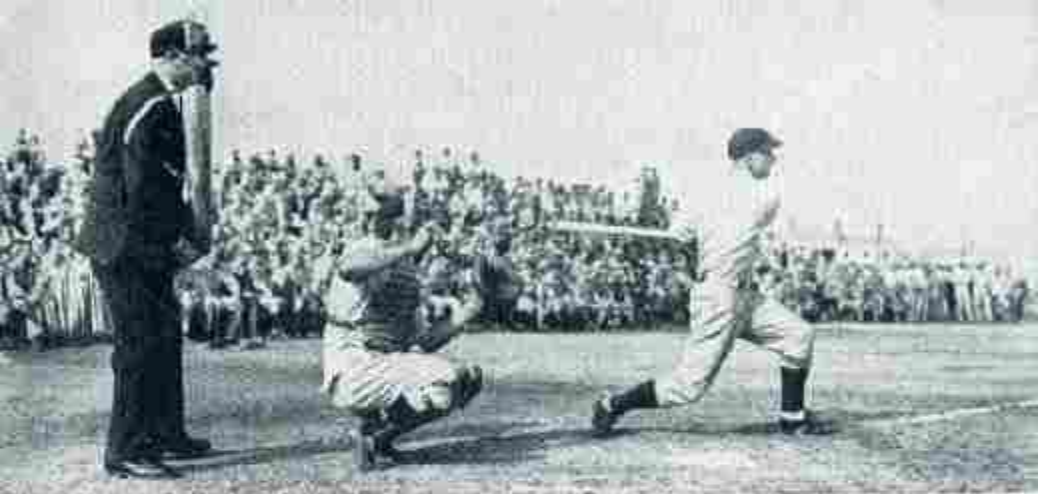


PX's are conveniently located throughout the Camp

**Medical Care**—For first aid treatment for minor injuries go to the dispensary in your unit. In case of serious illness or injury an ambulance may be obtained by calling 2315.

**Post Exchanges**—There are 16 Post Exchanges in the Camp where you may do your shopping at reasonable prices. (See map, pages 12 and 13.) There are soda fountains and snack bars at all of them. There are also barber shops in 10 of the PX's, and dry cleaning shops in 6 of them.

**Post Office**—The Camp Post Office, located at 29th and Center Streets in Building 105, offers a complete postal service. Business hours are 8:00 a.m. to 6:00 p.m. week days, 8:00 a.m. to 11:00 a.m. Sundays. Mails are dispatched at 9:10 a.m., 2:30 p.m. and 8:10 p.m.



**Recreation** —Baseball diamonds are located along Division Street and there are a number of softball diamonds scattered throughout the Camp. They are available to everyone.

Three rivers are at your disposal for fishing, the Blue River, Sugar Creek and Driftwood Creek. For full information, including seasonal restrictions, contact the Internal Security and Intelligence Division, Building 879.

The Sports Arena is located at 29th and Gatling Streets. Arrangements for basket ball, boxing, wrestling and other activities are made by the Special Service Officer, who is located at Post Headquarters.

- 5 -





Regular Services are held in the Camp's Twelve Chapels

**Red Cross**—The American Red Cross maintains an office in Building 214, corner of 29th Street and School House Road. There is a representative on duty there 24 hours a day to assist you in personal or family problems.

**Religious Services**—Regular religious services are conducted weekly at 12 Chapels throughout the Camp and at Wakeman General Hospital. Weekly schedules of services appear in the Camp newspaper. There are 21 Chaplains on the post, representing various faiths. Feel free to call on them at any time.

**Service Clubs**—There are 3 service clubs in the Camp where soldiers, their families and friends may dance, play games and relax. Each is equipped with a cafeteria, library, auditorium, public telephones, writing desks and many other features. The service clubs are open from 6:30 a.m. to 10:00 p.m. See map, pages 12 and 13, for locations.



**Theaters**—Camp Atterbury has 5 theaters where you can see the latest films at a small charge. From time to time top-flight stage entertainment is also on the program. Watch the Camp newspaper and bulletin boards for announcements. Locations of the theaters are shown on the map, pages 12 and 13.

**Telegrams**—For best service call the Western Union office at Columbus, Indiana. Office hours are: week days, 7:00 a.m. to 10:00 p.m.; Sundays, 8:00 a.m. to 10:00 a.m. and 2:00 p.m. to 4:00 p.m. Any of the public telephones in the Camp may be used for this purpose. In case of emergency, telegrams may be sent from the Post Signal Telephone and Telegraph Office, located in Building 102 on Center Street (see map). This office is open 24 hours a day.

**Telephones**—See pages 15 to 19.

-7-

At night GI's can relax and enjoy a movie



**Transportation**—The Camp Atterbury Bus Station is located on School House Road just north of Edinburg Street. Busses leave the station approximately every hour for Indianapolis, Columbus, Edinburg and Franklin.

The Louisville-Indianapolis line of the Pennsylvania Railroad has four trains daily in each direction which stop at both Columbus and Edinburg.

There are busses, railroads and air lines operating in all directions out of Indianapolis. For full information on routes, rates, reservations, etc., you can call the following numbers at Indianapolis:

**Busses . . . Riley 4501 ★ Trains . . . Riley 3355**

<b>Airlines</b>	{	<b>American</b>	<b>Belmont 3501</b>
		<b>Eastern</b>	<b>Belmont 3330</b>
		<b>T. W. A.</b>	<b>Belmont 2206</b>

- 8 -

Busses leave for Indianapolis every hour



**U. S. O.**—There are many U. S. O. Clubs in nearby cities, maintained exclusively for your use as recreational centers when you are off the post. Here is a complete list of Service Men's Centers and other agencies in Indianapolis:

### SERVICE MEN'S CENTERS

- |  |  |
|--|--|
| 1. Wabash Street Branch,<br>128 W. Wabash Street     | 4. Roberts Park Center, Vermont<br>and Delaware Streets  |
| 2. Service Men's Canteen,<br>Union Station           | 5. Senate Avenue Branch (Negro),<br>219 N. Senate Avenue |
| 3. Illinois Street Branch,<br>502 N. Illinois Street |  |

### OTHER U.S.O. AGENCIES

#### CHURCH AND FRATERNAL SERVICE CENTERS

- |   |  |
|---|--|
| Catholic USO, 124 W. Georgia St.                    | Red Cross,<br>Chamber of Commerce Bldg.                      |
| Christ Church, Monument Circle<br>(Sunday only)     | Second Presbyterian Church,<br>Vermont and Pennsylvania Sts. |
| Homes Registry,<br>120 Monument Circle              | Travelers Aid Society,<br>Union Station and Bus Terminal     |
| Kirshbaum Center (USO-JWB),<br>2314 N. Meridian St. | Y.M.C.A., 310 N. Illinois St.                                |
| Lutheran Parish Center,<br>Ohio and East Sts.       | Y.M.C.A. (Negro), 450 N. Senate                              |
| Masonic Service Center,<br>525 N. Illinois Street   | Y.W.C.A., 329 N. Pennsylvania St.                            |
|   | Y.W.C.A. (Negro), 653 N. West St.                            |

U. S. O. Headquarters at Columbus are located at 520 Washington Street. There is also a Branch at 4th and Franklin Streets.

At Franklin U. S. O. Headquarters are in the Armory and there is a Branch (colored) at 453 W. King Street.

The Edinburg U. S. O. Club is located at 305 E. Main.



Wakeman General and Convalescent Hospital



## WAKEMAN GENERAL AND CONVALESCENT HOSPITAL

★Wakeman General and Convalescent Hospital, commanded by Colonel Haskett L. Conner, is one of the Army's specialized hospitals. These specialties include ophthalmologic, plastic and neuro-surgery and neurology. Other facilities available for the treatment of patients are the large x-ray and clinical laboratories, a large and well staffed physical therapy department, dental clinic and an eye, ear, nose and throat clinic.

The hospital has a 10,000 bed capacity. Of these, 2,800 beds are for those needing specialized treatment, 200 for those needing orthopedic or general surgery, and 7,000 for the patients in the Convalescent Reconditioning Service. The buildings, 57 in all, are of permanent concrete block construction and the majority are two stories in height.

Occupational therapy and mental and physical reconditioning are fundamental in the treatment of convalescing soldiers. The program also embodies all types of indoor and outdoor recreational activities and is designed to bring every soldier up to the maximum physical fitness.

An adjunct of Wakeman Hospital is the Medical Department Enlisted Technicians' School of the Women's Army Corps. Here WACs are trained as medical, surgical, dental, laboratory and x-ray technicians. Upon completion of their training they are assigned to Army General Hospitals throughout the United States.

# Map of CAMP ATTERBURY

## FOR PERSONAL TELEPHONE CALLS

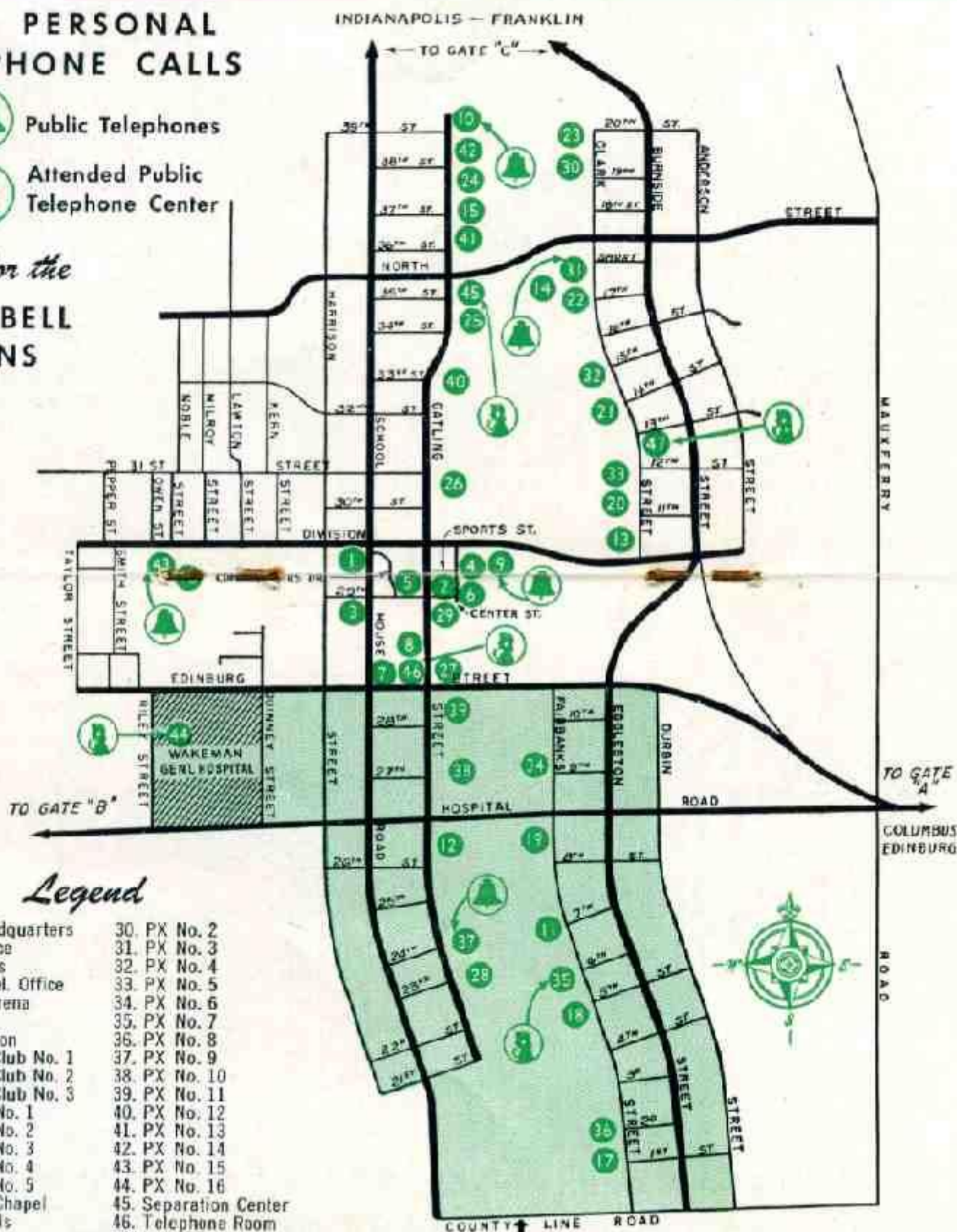


Public Telephones



Attended Public Telephone Center

*Look for the  
BLUE BELL  
SIGNS*



## Legend

- |                        |                                |
|------------------------|--------------------------------|
| 1. Post Headquarters   | 30. PX No. 2                   |
| 2. Post Office         | 31. PX No. 3                   |
| 3. Red Cross           | 32. PX No. 4                   |
| 4. Tel. & Tel. Office  | 33. PX No. 5                   |
| 5. Sports Arena        | 34. PX No. 6                   |
| 6. Bank                | 35. PX No. 7                   |
| 7. Bus Station         | 36. PX No. 8                   |
| 8. Service Club No. 1  | 37. PX No. 9                   |
| 9. Service Club No. 2  | 38. PX No. 10                  |
| 10. Service Club No. 3 | 39. PX No. 11                  |
| 11. Theater No. 1      | 40. PX No. 12                  |
| 12. Theater No. 2      | 41. PX No. 13                  |
| 13. Theater No. 3      | 42. PX No. 14                  |
| 14. Theater No. 4      | 43. PX No. 15                  |
| 15. Theater No. 5      | 44. PX No. 16                  |
| 16. Theater-Chapel     | 45. Separation Center          |
| 17-28. Chapels         | 46. Telephone Room (Bldg. 717) |
| 29. PX No. 1           | 47. Reception Center           |



## *Tips to the Service Man*

**Automobiles**—Automobiles brought to the Camp must have Camp Atterbury tags. These must be purchased within three days after arrival. At the time of purchase, the automobile must pass the Post Motor Pool Inspection Test. Tags may be purchased at the Provost Marshal's Office, Building 879.

**Traffic Regulations**—Traffic rules are rigidly enforced. Speed limits are 15 m.p.h. in the cantonment area, 30 m.p.h. in all other areas. Speed limits are clearly indicated along the roadside throughout the Camp. When passing troops, the maximum speed is 10 m.p.h. Park only in designated parking areas.

**Housing**—Accommodations in the Guest Houses are limited and housing facilities in the vicinity of the Camp are scarce. Soldiers are urged not to bring their families and friends for overnight stays until they locate a place for them. If unable to obtain reservations at the Guest House, the best bet is to contact U. S. O. Headquarters in nearby cities (see page 9).

**Military Police**—The M.P.'s perform the same function in the Army as the police in civilian life. They represent the Camp Commander, and their job is to see that his orders are carried out. Off the post, military police will give you all possible assistance; you will find them on duty at railroad and bus stations and other public places.

## Telephone Service

PUBLIC TELEPHONE centers, with attendants on duty to put through calls, make change and assist you in any way possible, will be found at the following locations:

**Separation Center (Building 1216)**

**Post Exchange No. 7 (Building 412)**

**Wakeman General Hospital**

**Telephone Room (Building 717)**

**Reception Center (Building 1589)**

In addition there are a number of public telephones in seven other locations throughout the Camp. Public telephone centers are indicated on the map, pages 12 and 13.

An experienced telephone man has been assigned to the Camp as Telephone Manager. His principal duty is to see that the public telephones serve you and the other men most effectively. If you have any suggestions, questions or criticisms he will be glad to know about them. His name is Harvey Garrett, and his headquarters are at the Post Signal Office, Building 102.

- 15 -

Major Taylor C.  
Smith, Post  
Signal Officer, and  
Harvey Garrett, Camp  
Telephone Manager





## A FEW WORDS ABOUT

### *Personal Telephone Calls*

TODAY, because of the war, telephone central offices and Long Distance lines are overcrowded. New lines and equipment cannot be added to keep pace with the wartime demand because nearly all of the telephone industry's available materials and manufacturing manpower and facilities are devoted to the production of vital communications equipment and electronic devices for the Army and Navy. So if your Long Distance calls are sometimes delayed we know you'll understand.

Army requirements limit the use of telephones connected with the Camp Atterbury switchboard to official Army business. This means that no outgoing personal calls can be made over Army telephones, and incoming calls can be completed *only in case of extreme emergency*. The public telephones located throughout the Camp have been provided for your personal calls.

- 16 -

These girls handle the Camp's official calls





Telephone Centers are popular places

## *Long Distance Tips*

**Station-to-Station Calls**—If you wish to take advantage of the lower rate and are reasonably sure that the people you wish to reach will be home, then place a station-to-station call. This means that you are asking the operator to connect you with a particular telephone. The charges begin when that telephone is answered.

**Person-to-Person Calls**—If you wish to talk to a particular individual and no one else, and are not sure if that person is available, place a person-to-person call. The rate is slightly higher than for a station-to-station call, but the charges do not begin until the person you are calling is ready to talk.

**Calls to Edinburg** are local calls, and cost only five cents from a public telephone.



Telephone Room at Wakeman Hospital

**Collect Calls**—Telephone charges may be reversed at no extra cost on calls of 25 cents or more. If you wish to reverse the charges, just tell the operator when you place the call that it is to be a "collect call."

**Reduced Rates**—Long Distance rates are lowest after 6:00 p.m. and all day on Sunday. The reductions do not apply, however, on calls to nearby points where the basic station-to-station rate is 35 cents or less.

### *You Can Help*

- by planning your conversation in advance so as to keep it as brief as possible
- by having plenty of change ready
- by waiting near the telephone if your call is delayed
- by calling by number whenever you can



# LONG DISTANCE RATES

From Camp Atterbury to:	Station-to-Station		Person-to-Person	
	Week Days	Night and Sun.	Week Days	Night and Sun.
Atlanta, Ga. . . . .	\$1.15	\$0.75	\$1.55	\$1.15
Birmingham, Ala. . . . .	1.15	.75	1.55	1.15
Boston, Mass. . . . .	1.90	1.35	2.55	2.00
Chicago, Ill. . . . .	.80	.50	1.10	.80
Cincinnati, Ohio. . . . .	.45	.35	.65	.55
Cleveland, Ohio . . . . .	.95	.60	1.25	.90
Dallas, Tex. . . . .	1.75	1.25	2.35	1.85
Denver, Col. . . . .	2.20	1.55	2.95	2.30
Des Moines, Iowa . . . . .	1.25	.85	1.65	1.25
Detroit, Mich. . . . .	.90	.60	1.20	.90
Evansville, Ind. . . . .	.65	.40	.90	.65
Fort Wayne, Ind. . . . .	.65	.40	.90	.65
Fort Worth, Tex. . . . .	1.90	1.35	2.55	2.00
Indianapolis, Ind. . . . .	.30	.30	.45	.45
Little Rock, Ark. . . . .	1.25	.85	1.65	1.25
Louisville, Ky. . . . .	.45	.35	.65	.55
Los Angeles, Calif. . . . .	3.50	2.50	4.50	3.50
Miami, Fla. . . . .	2.20	1.55	2.95	2.30
Nashville, Tenn. . . . .	.85	.55	1.15	.85
New Orleans, La. . . . .	1.65	1.20	2.20	1.75
New York, N. Y. . . . .	1.60	1.15	2.15	1.70
Omaha, Neb. . . . .	1.40	1.00	1.85	1.45
Philadelphia, Pa. . . . .	1.45	1.05	1.95	1.55
Phoenix, Ariz. . . . .	3.00	2.10	4.00	3.10
Pittsburgh, Pa. . . . .	1.05	.70	1.40	1.05
Portland, Ore. . . . .	3.50	2.50	4.50	3.50
St. Louis, Mo. . . . .	.85	.55	1.15	.85
St. Paul, Minn. . . . .	1.40	1.00	1.85	1.45
Seattle, Wash. . . . .	3.50	2.50	4.50	3.50
South Bend, Ind. . . . .	.75	.45	1.05	.75
Tulsa, Okla. . . . .	1.45	1.05	1.95	1.55
Washington, D. C. . . . .	1.35	.95	1.80	1.40

Night and Sunday rates apply from 6:00 p.m. to 4:30 a.m. every night and all day Sundays. All rates listed are for 3 minutes.

FEDERAL TAXES ARE NOT INCLUDED



## ★ ★ TELEPHONE NUMBERS ★ ★

Name .....

Address .....

Telephone .....

---

Name .....

Address .....

Telephone .....

---

Name .....

Address .....

Telephone .....

---

Name .....

Address .....

Telephone .....

---

Name .....

Address .....

Telephone .....

# 1945

S M T W T F S	S M T W T F S	S M T W T F S
APRIL	MAY	JUNE
1 2 3 4 5 6 7 8 9 10 11 12 13 14 15 16 17 18 19 20 21 22 23 24 25 26 27 28 29 30	1 2 3 4 5 6 7 8 9 10 11 12 13 14 15 16 17 18 19 20 21 22 23 24 25 26 27 28 29 30 31	1 2 3 4 5 6 7 8 9 10 11 12 13 14 15 16 17 18 19 20 21 22 23 24 25 26 27 28 29 30
JULY	AUGUST	SEPTEMBER
1 2 3 4 5 6 7 8 9 10 11 12 13 14 15 16 17 18 19 20 21 22 23 24 25 26 27 28 29 30 31	1 2 3 4 5 6 7 8 9 10 11 12 13 14 15 16 17 18 19 20 21 22 23 24 25 26 27 28 29 30 31	1 2 3 4 5 6 7 8 9 10 11 12 13 14 15 16 17 18 19 20 21 22 23 24 25 26 27 28 29
OCTOBER	NOVEMBER	DECEMBER
1 2 3 4 5 6 7 8 9 10 11 12 13 14 15 16 17 18 19 20 21 22 23 24 25 26 27 28 29 30 31	1 2 3 4 5 6 7 8 9 10 11 12 13 14 15 16 17 18 19 20 21 22 23 24 25 26 27 28 29 30	1 2 3 4 5 6 7 8 9 10 11 12 13 14 15 16 17 18 19 20 21 22 23 24 25 26 27 28 29

# 1946

S M T W T F S	S M T W T F S	S M T W T F S
JANUARY	FEBRUARY	MARCH
1 2 3 4 5 6 7 8 9 10 11 12 13 14 15 16 17 18 19 20 21 22 23 24 25 26 27 28 29 30 31	1 2 3 4 5 6 7 8 9 10 11 12 13 14 15 16 17 18 19 20 21 22 23 24 25 26 27 28	1 2 3 4 5 6 7 8 9 10 11 12 13 14 15 16 17 18 19 20 21 22 23 24 25 26 27 28 29 30
APRIL	MAY	JUNE
1 2 3 4 5 6 7 8 9 10 11 12 13 14 15 16 17 18 19 20 21 22 23 24 25 26 27 28 29 30	1 2 3 4 5 6 7 8 9 10 11 12 13 14 15 16 17 18 19 20 21 22 23 24 25 26 27 28 29 30 31	1 2 3 4 5 6 7 8 9 10 11 12 13 14 15 16 17 18 19 20 21 22 23 24 25 26 27 28 29

